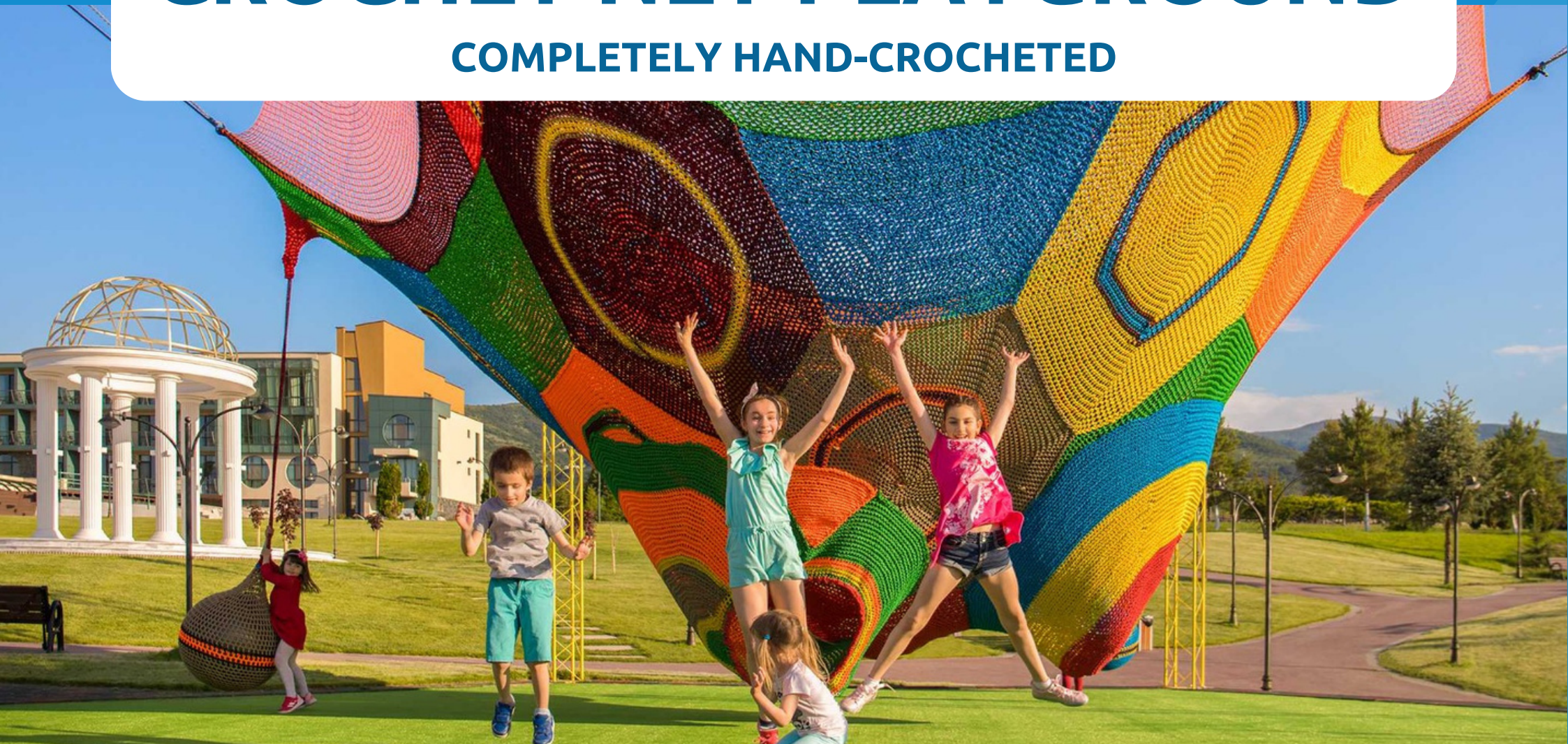




CROCHET NET PLAYGROUND

COMPLETELY HAND-CROCHETED



SPECIAL AWARD
FOR RESPONSIBLE INVOLVEMENT
IN URBAN RECREATIONAL
ACTIVITIES

Over 500 **successfully** completed projects
in less than 10 years.



TURNKEY BUSINESS



**Do you want to start a crochet net playground business in the amusement industry?
Waterboyz is here to help you!**

These playgrounds are ideal to shopping centers, cruise lines, fast food restaurants, spas, retail chains, and office buildings.

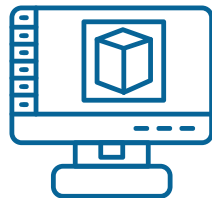
The crochet net playground is completely hand-crocheted in one or more colors. There are specific elements of the net, located on different levels and connected to each other in formed sections with different functions-a swing, a tunnel, a labyrinth, etc.

- suitable for outdoor and indoor installations
- UV and water resistant
- vivid colors

We will take care of all the details including:



FREE
ASSISTANCE



FREE 3D
PROJECTION



FREE BUSINESS
PLAN



INSTALLATION



MAINTENANCE



SAFETY
CERTIFICATE

ABOUT CROCHET NET PLAYGROUND

NETS

- 5 mm High Tenacity Technical Polyester
- 16 mm PPM triple twisted
- suitable for Outdoor and Indoor installations
- UV and water resistant



5 mm



16 mm

CERTIFICATES

- EN 1176-1/11
- EN 1263-1/11
- B1, B2 by DIN4102 FLAME RETARDENCY
- ISO 9001
- ISO 45001
- ISO 14001

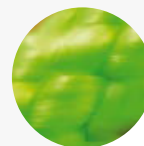
BASIC COLORS

The crochet net playground are made of high quality yarn and state-of-the-art machinery, is a production of SHIELD safety nets - one of the leaders on the international market. Their ropes are made of high quality raw material which have passed all necessary tests in accordance with their place of use.

ORANGE



NEON GREEN



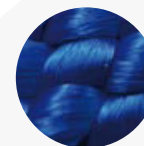
NEON YELLOW



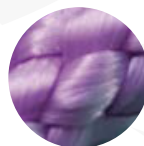
BLUE



DARK BLUE



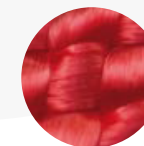
LILAC



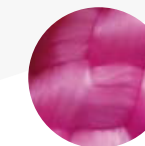
GREEN



RED



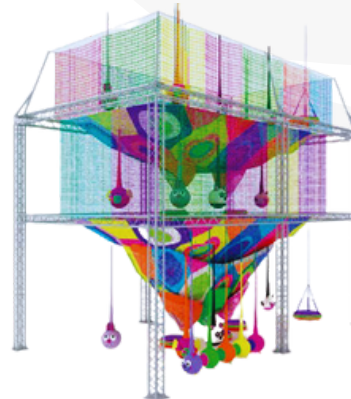
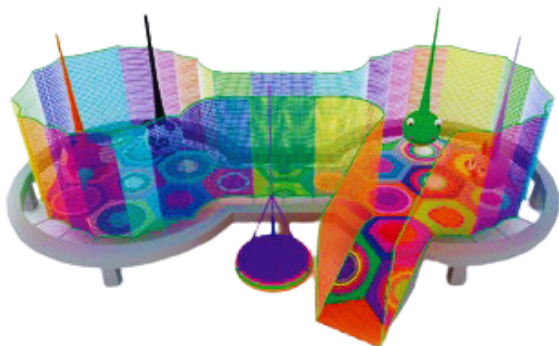
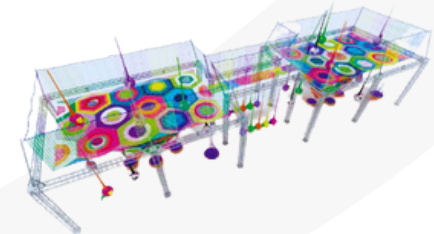
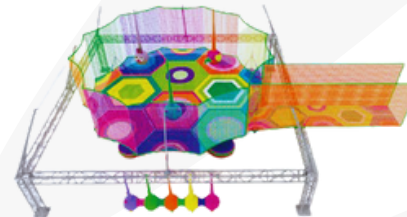
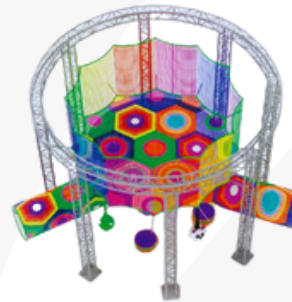
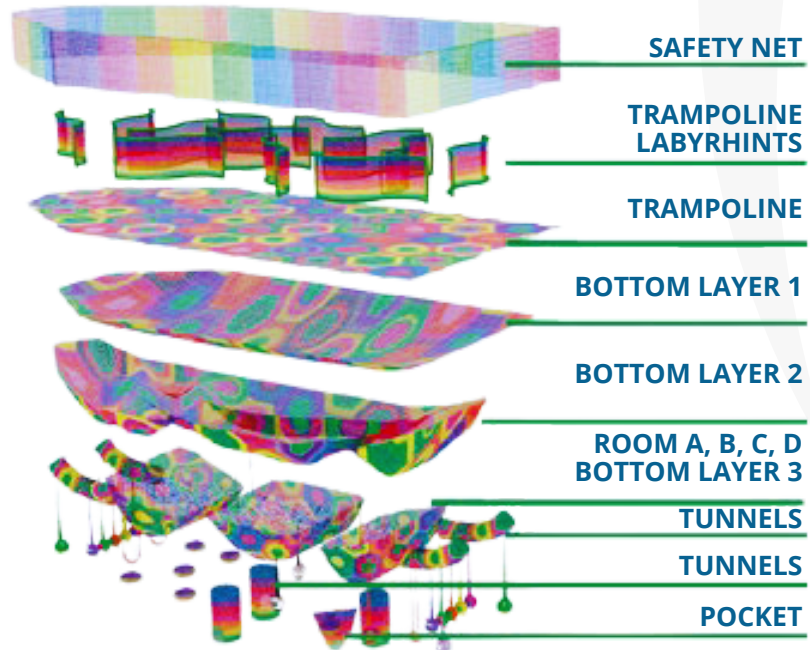
PINK



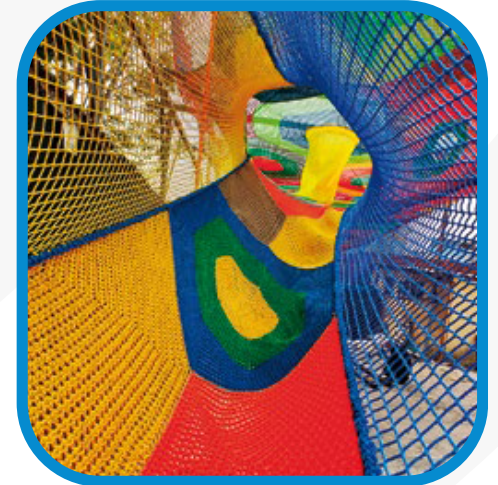
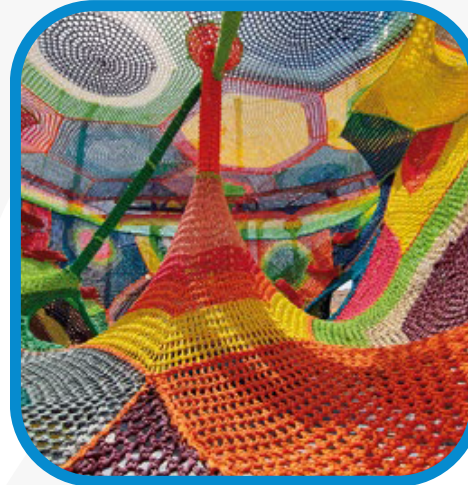
PURPLE



CROCHET NET PLAYGROUND: DESIGN



CROCHET NET PLAYGROUND: INTERIOR DESIGN



REGULAR MAINTENANCE INSTRUCTIONS

DAILY INSPECTION:

- of the facility and its safety zone for cleanliness. Please, clean with watered clothes /or water and soap/, if any dirt/stains appear
- of the facility and its safety zone for sharp objects or lost items inside
- of the facility for torn yarns or ropes. In case of broken ropes due to some acts of vandalism /or any other reason/ - please, close the facility for use, take detailed pictures and contact the manufacturer/dealer immediately for further instructions!

WEEKLY INSPECTION:

- of the integrity of winches/lever chains and their even lifting /tensioning, if necessary
- of wear equipment components /crochet partition walls, "pockets", inside crochet columns/, ball-swings, caterpillars, floor seats, etc

MONTHLY INSPECTION:

- Inspect the foundation and the bearing structure of the equipment for corrosion and formation of deformations. Adjust, repair and replace, if necessary



After end of season /or in case you see some dirt/ spray the facility with a 3:1 water + soap solution. Rinse with water and let it dry for 24-48 hours. Repeat during the active season, if necessary. **Do not use chemically active preparations.**



Disinfection: spray the equipment with a solution of water and kids-friendly disinfectant, in a ratio of 3:1. Do not rinse. Let it dry for 24 hours. **Repeat monthly.**



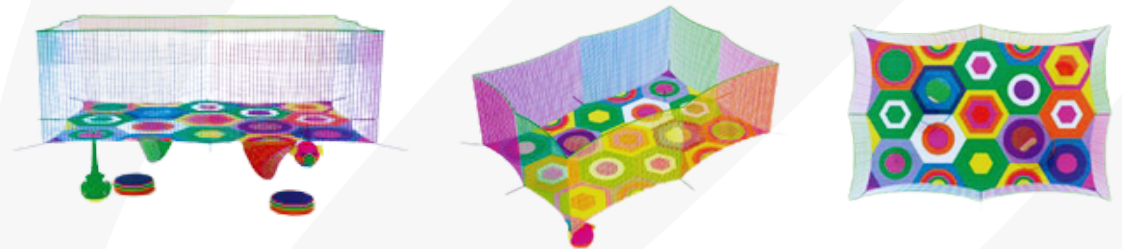
In countries with temperatures above 35 °C during the active seasons and abundant sunny days, we recommend that you provide a light-colored protective sunshade above the facility. Otherwise you risk about 30% fading of some of the primary colors of the rope approximately after 1 year of usage. Active play of kids in temperatures of 35 °C or higher may cause dehydration of users.



In countries with low temperatures during the winter season and heavy snowfalls, for all OUTDOOR crocheted playground , we recommend removing and storing the facility for the winter season. In case the facility is also used during the winter season – please, add a tent above it and plow the snow off it .

23 m²

- suitable for outdoor and indoor installations
- UV and water resistant



2 leveled

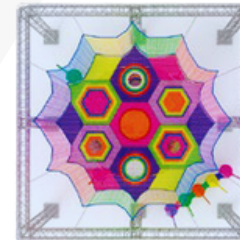
- 1 flat top layer for jumping with 2 holes
- 2 pockets (exits/entrances)
- safety net 6-40 mm PA Knotless, 2 m (H)
- 4 LCP*
- 7 vivid colors

TECHNICAL DETAILS

Ropeland net size	3x5x3,5 m (H)
Minimum required installation space	4x6x3,5 m (H)
Crochet net playground	23 m ²
Weight of the net	150 kg
EN1176 maximum load capacity	41 persons
One cycle of usage	7 persons

65 m²

- suitable for outdoor and indoor installations
- UV and water resistant



3 leveled

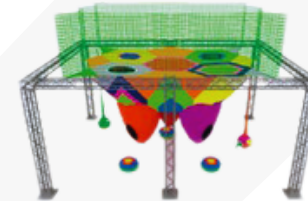
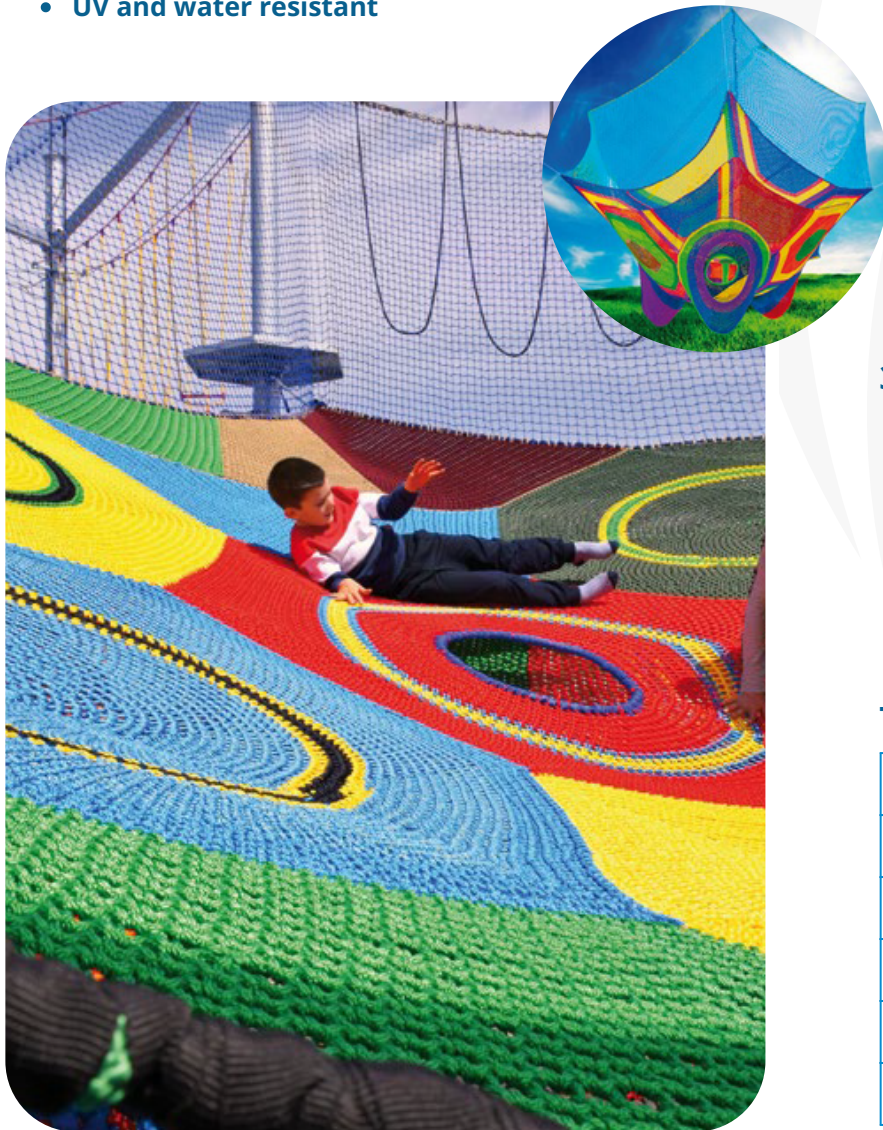
- 1 flat top layer for jumping with 2 holes
- 1 labyrinth (middle layer) with partition walls and crochet columns
- 3 pockets (exits/entrances)
- safety net 6-40 mm PA Knotless, 2 m (H)
- 8 LCP*
- 7 vivid colors

TECHNICAL DETAILS

Ropeland net size	5x5x5 m (H)
Minimum required installation space	7x7x5 m (H)
Crochet net playground	65 m ²
Weight of the net	330 kg
EN1176 maximum load capacity	100 persons
One cycle of usage	16 persons

87 m²

- suitable for outdoor and indoor installations
- UV and water resistant



3 leveled

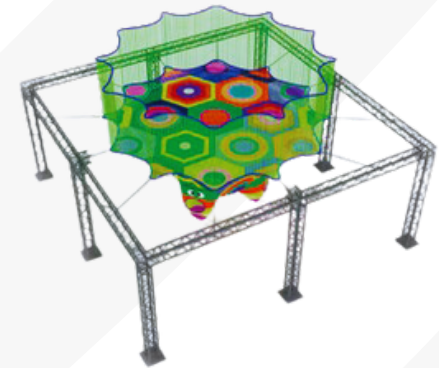
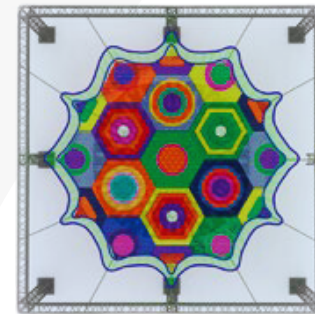
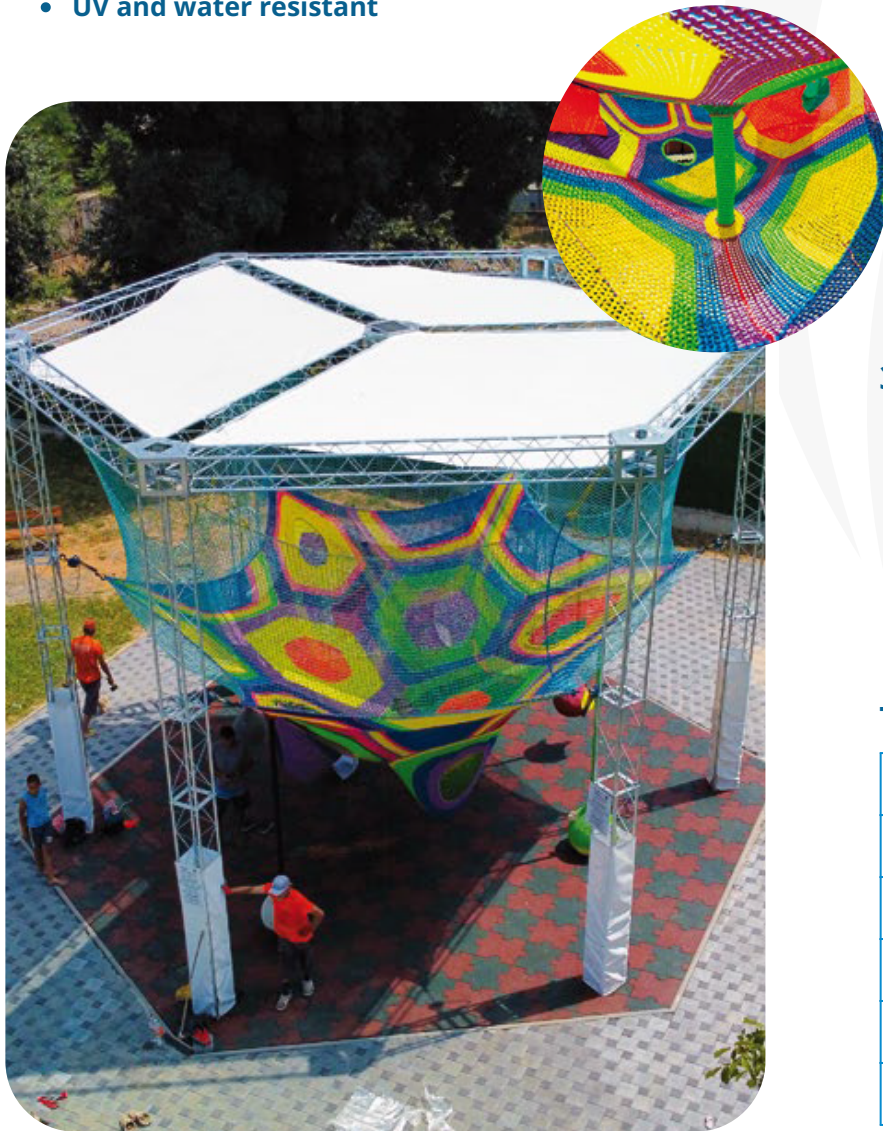
- 1 flat top layer for jumping with 2 holes
- 1 labyrinth (middle layer) with partition walls and crochet columns
- 3 pockets (exits/entrances)
- safety net 6-40 mm PA Knotless, 2 m (H)
- 8 LCP*
- 7 vivid colors

TECHNICAL DETAILS

Ropeland net size	7x5x5 m (H)
Minimum required installation space	9x7x5 m (H)
Crochet net playground	87 m ²
Weight of the net	470 kg
EN1176 maximum load capacity	150 persons
One cycle of usage	20 persons

118 m²

- suitable for outdoor and indoor installations
- UV and water resistant



3 leveled

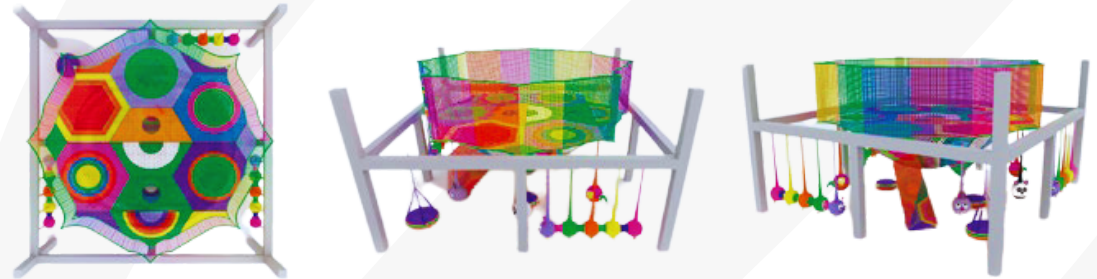
- 1 flat top layer for jumping with 3 holes
- 1 labyrinth (middle layer) with partition walls and crochet columns
- 3 pockets (exits/entrances)
- safety net 6-40 mm PA Knotless, 2 m (H)
- 8 LCP*
- 7 vivid colors

TECHNICAL DETAILS

Ropeland net size	7x7x5 m (H)
Minimum required installation space	9x9x5 m (H)
Crochet net playground	118 m ²
Weight of the net	590 kg
EN1176 maximum load capacity	200 persons
One cycle of usage	25 persons

229 m²

- suitable for outdoor and indoor installations
- UV and water resistant



3 leveled

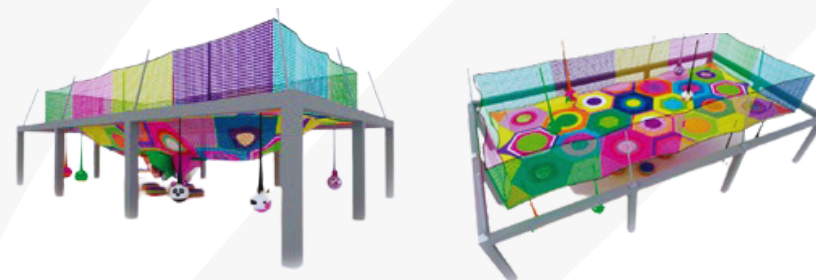
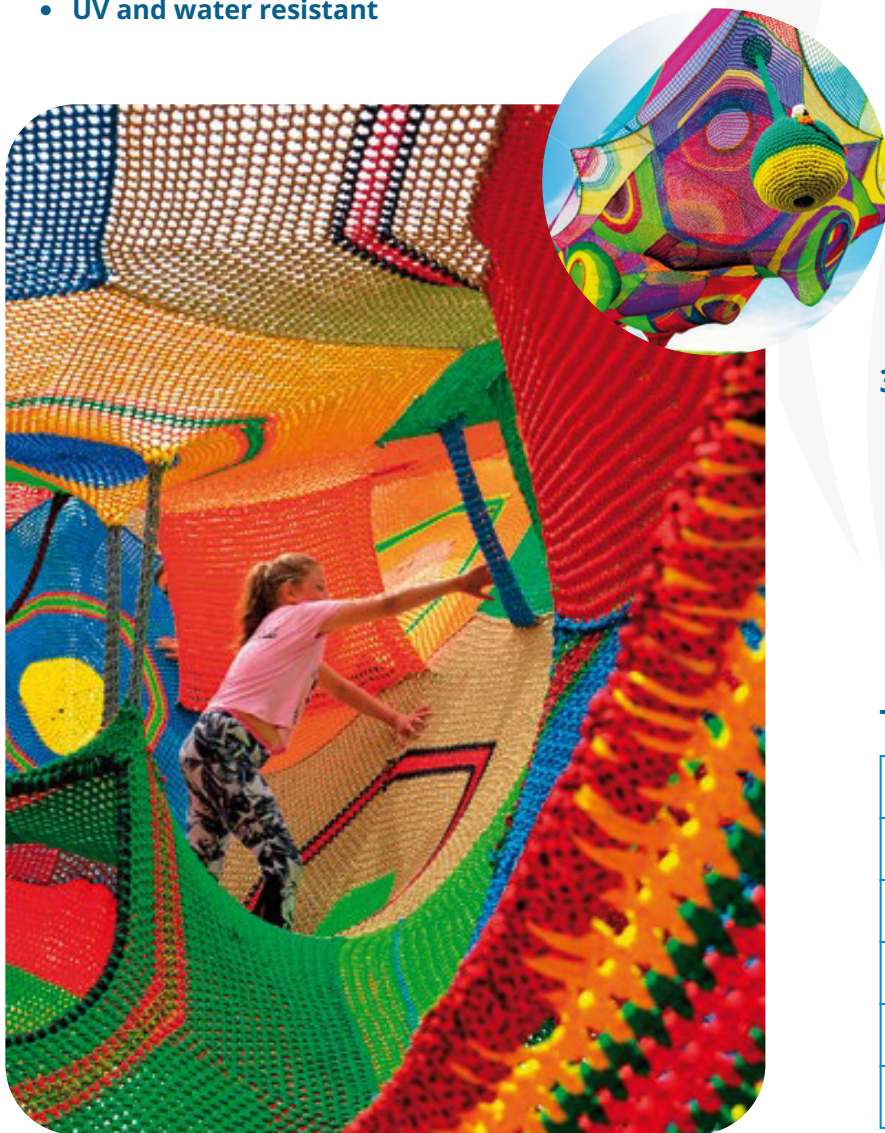
- 1 flat top layer for jumping with 3 holes
- 1 labyrinth (middle layer) with partition walls and crochet columns
- 3 pockets (exits/entrances)
- safety net 6-40 mm PA Knotless, 2 m (H)
- 8 LCP*
- 7 vivid colors

TECHNICAL DETAILS

Ropeland net size	10x10x5 m (H)
Minimum required installation space	12x12x5 m (H)
Crochet net playground	229 m ²
Weight of the net	1100 kg
EN1176 maximum load capacity	300 persons
One cycle of usage	50 persons

235 m²

- suitable for outdoor and indoor installations
- UV and water resistant



3 leveled

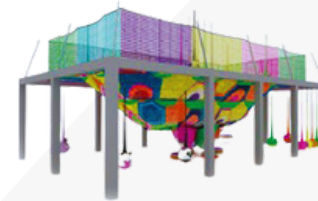
- 1 flat top layer for jumping with 3 holes
- 1 labyrinth (middle layer) with partition walls and crochet columns
- 4 pockets (exits/entrances)
- safety net 6-40 mm PA Knotless, 2 m (H)
- 12 LCP*
- 7 vivid colors

TECHNICAL DETAILS

Ropeland net size	14x7x5 m (H)
Minimum required installation space	16x9x5 m (H)
Crochet net playground	235 m ²
Weight of the net	1200 kg
EN1176 maximum load capacity	400 persons
One cycle of usage	55 persons

265 m²

- suitable for outdoor and indoor installations
- UV and water resistant



3 leveled

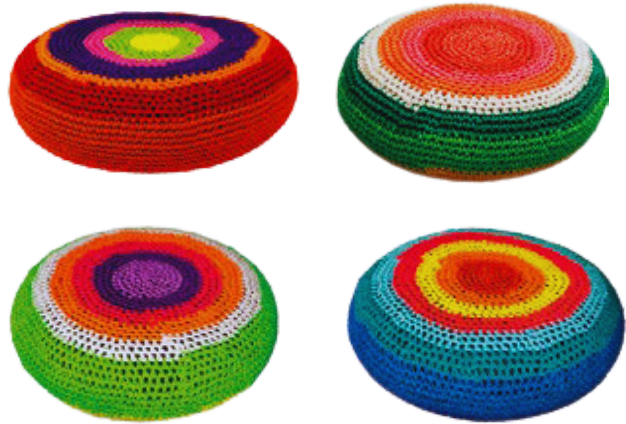
- 1 flat top layer for jumping with 3 holes
- 1 labyrinth (middle layer) with partition walls and crochet columns
- 4 pockets (exits/entrances)
- safety net 6-40 mm PA Knotless, 2 m (H)
- 12 LCP*
- 7 vivid colors

TECHNICAL DETAILS

Ropeland net size	14x7x5 m (H)
Minimum required installation space	16x9x5 m (H)
Crochet net playground	265 m ²
Weight of the net	1400 kg
EN1176 maximum load capacity	445 persons
One cycle of usage	60 persons

SWINGS AND ACCESSORIES

- suitable for outdoor and indoor installations
- UV and water resistant





Waterboyz International



+40 749 178 385



flaviusjaja@waterboyz.ro



www.waterboyz.ro



154 Ion Rațiu Street, Constanța, Romania